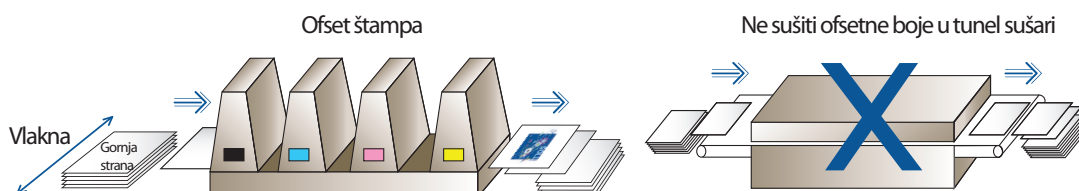


Ofsetni preslikači

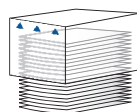
korak 1



korak 2



Prekriti otiske



ČEKAJTE

Konvencionalne ofset boje

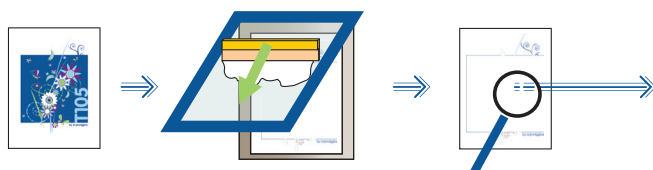


Ofsetne boje na vodenoj bazi



korak 3

Sitoštampa: Litho Back-up White XMA08

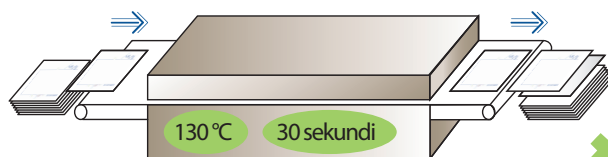


Litho Back-up White mora biti manji od ofsetne štampe (oko 0,5 mm)

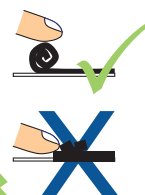


korak 4

Osušiti Litho Back-up White propuštanjem kroz tunel sušaru



Napraviti test osušenosti otiska

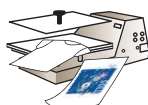


Odštampane otiske spakovati u plastičnu kesu

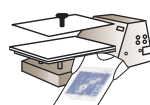


korak 5

Transfer preslikača možete uraditi i 6 meseci nakon štampe



170 - 180 °C
2,5 - 3 Bar s
5 - 15 Sekundi



Sačekajte dok se potpuno ne ohladi

SYMBOL

Subotica
Tel: +381(0) 24 643100
symbol@symbol.rs
www.symbol.rs

Beograd
Tel: +381(0) 11 2891977
Novi Sad
Tel: +381(0) 21 6742260

GRAPHIC CENTER

Zagreb
Tel: +385(0) 1 2987044
office@graphiccenter.hr
www.graphiccenter.hr